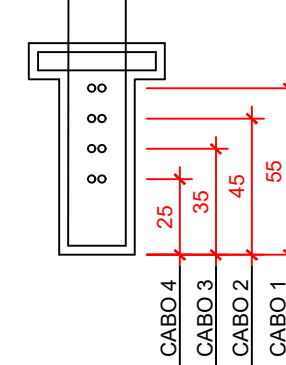
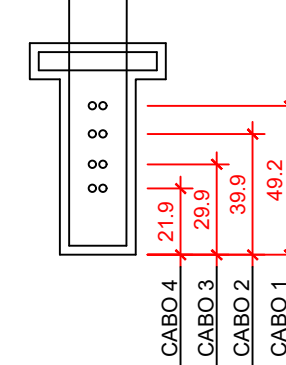
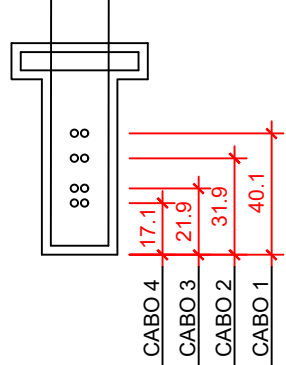
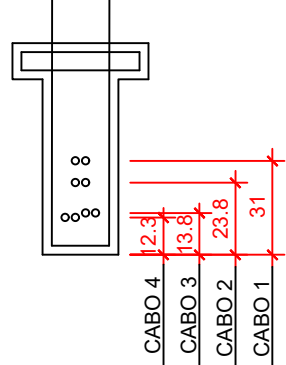
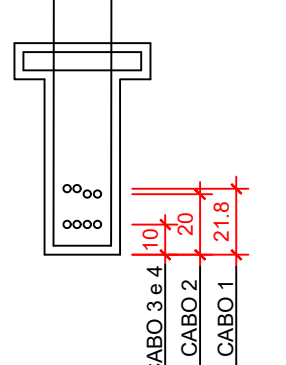
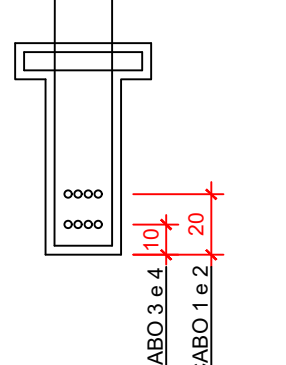
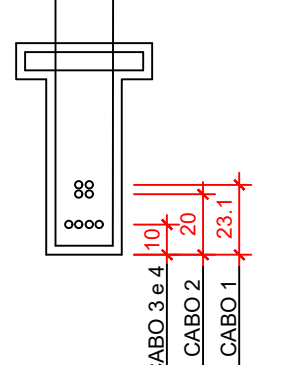
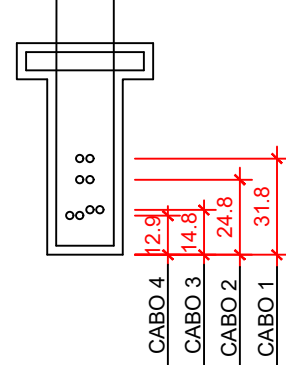
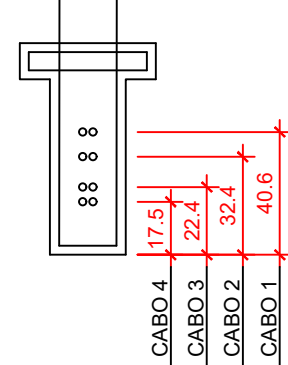
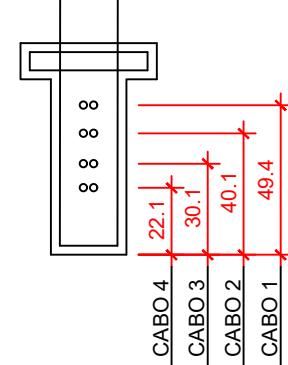
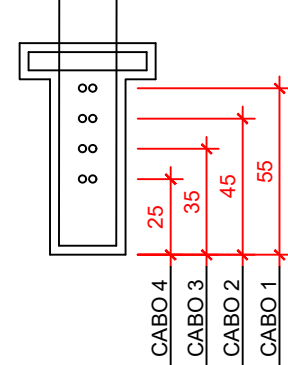


N	Ø	QUANT.	COMPRIMENTO (cm)	
			UNITÁRIO	TOTAL
VIGAS: 17,00m				
1	20	4	16,94	67,76
2	12,5	10	16,94	169,40
3	25	10	16,94	169,40
4	6,3	113	0,96	108,48
5	6,3	108	2,13	230,04
6	6,3	71	2,33	165,43
7	16	8	2,90	23,20

Ø	COMP. TOTAL (m)	PESO (kg)	
		UNITÁRIO	TOTAL
VIGAS 17,00m			
6,3	503,95	0,245	123,47
12,5	169,40	0,963	163,13
16	23,20	1,578	36,61
20	67,76	2,466	167,10
25	169,40	3,853	652,70
PESO TOTAL 1 VIGA =		1143,01 kg	
PESO TOTAL 8 VIGAS =		9.144,08 kg	



QUANTIDADE DE CABOS, BAINHAS E ANCORAGENS P/ 1 VIGA

Ancoragens passivas (unidades)

3 - USAR CONCRETO $f_{ck} = 30 \text{ MPa}$ NA SUPER- ESTRUTURA.

PRANCHA: 03/04